

miniconveyor™

Portable

Manufactured in 10 ft. lengths* and weighing only 170 lbs, they can be carried into position and set up in minutes. A foam filled core sandwiched between stainless steel plates means they are structurally strong, while remaining light and durable. The units stack and lock for easy transport. All accessories, hoppers and side extensions are also constructed from weight saving material.

*Available lengths: 5' (1.5m), 10' (3m), 15' (4.5m), 20' (6m)

Available widths: 15" (40cm), 20" (52cm)

Powerful

Miniconveyor uses powerful 370 and 550 watt motors, mounted inside the end rollers and specifically designed and manufactured in the USA for the application. Turning the belts at 80 and 120 ft/min, Miniconveyor is the fastest conveyor system in its class.

Versatile

Miniconveyor can go up a flight of stairs, make 90° turns, run on a 40° slope, across a rooftop, over rubble and more without a problem. Miniconveyor can be quickly deployed into place on site. Miniconveyors have been tested from the subways of New York to the rough terrain in Japan. The belts are reversible.

Rugged

Built for tough and demanding environments. The belts are made of high frequency PVC. Miniconveyor Systems are corrosion free, all aluminum and stainless steel construction. Drive motors are sealed to IP65 standards and protected by a thermal overload circuit to guard against damage. The impact resistant control box is waterproof and built to last. They cannot be built any tougher.

Manufactured by:



The Portable, Powerful Fire & Emergency Conveyor



Modular

Modular construction lends itself to rescue efforts. Units can be locked together using a clamp kit and 4 modules can provide a 40ft (12m) unsupported span. Miniconveyor systems can be configured to adapt to changing needs. The size and weight allow Miniconveyor to reach difficult places and traverse all kinds of rough terrain.

Safe

Every part of the system has been designed with safety in mind. The control box circuit is 24 AC and it is GFI-rated to ensure the safety of all individuals. The drive mechanism is contained within the frame offering no pinch points and the belt edges are protected under guard. Side extensions and hoppers are all easily installed using bolts to ensure a secure assembly.

ACCESSORIES

miniconveyor™

A **cantilever** set on a **leg kit** enables the discharge conveyor to overhang.

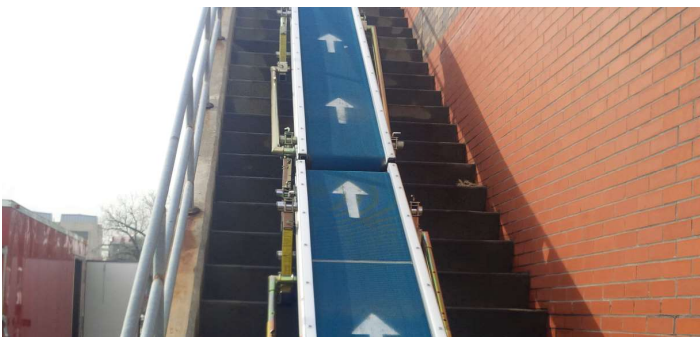
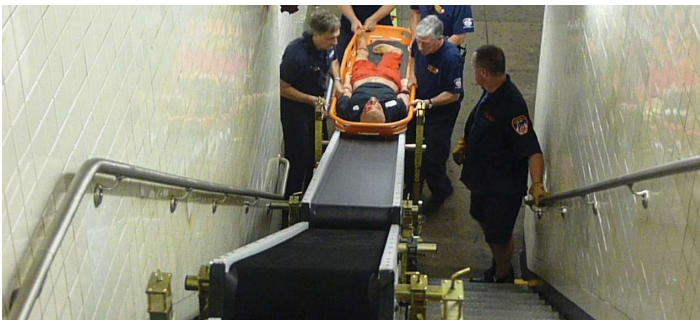
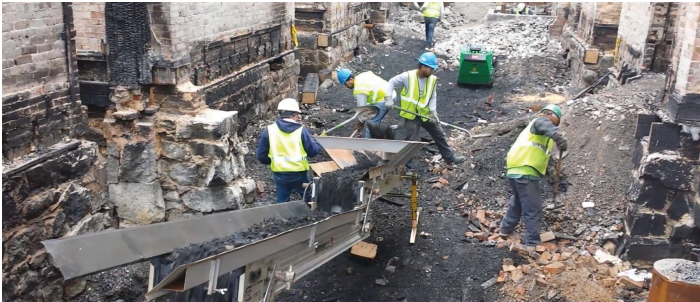
Side extensions allow for moving loose materials to eliminate any spillage.

Hand loading, Minidigger and Skid steer **Hoppers** are available.

Clamp Kits lock units together to span up to 40' (12m) with no center support.
(Transition Clamp kit pictured)



Add **wheels** and move units effortlessly



Adjustable leg kits set up and adjust quickly without tools. Turn corners and convey material at angles up to 40°

Miniconveyor Models	3M40P (smooth) 3M40C (cleated)	3M52P (smooth) 3M52C (cleated)
Length	10 ft (3m)	10 ft (3m)
Width	15 in (40cm)	20 in (52cm)
Depth	7.5 in (19cm)	7.5 in (19cm)
Weight	150 lbs (68kg)	120 lbs (90kg)
Construction	Stainless / Aluminum 80 ft (24m)/min	Stainless / Aluminum 120 ft (36m)/min
Speed 480V	300 lbs (136kg)	450 lbs (204kg)
Nominal Load	40 Degrees	40 Degrees
Maximum Angle <small>*Load and condition dependent</small>		
BELT		
Material	Reinforced PVC	Reinforced PVC
Width	12 in (30.5cm)	16 in (40.6cm)
Thickness	0.125 in	0.125 in
Fastener	Stainless Wire Hook	Stainless Wire Hook
Standard Cleats	1" on 12" center	1" on 12" center
ELECTRICAL		
Motor Type	Electric/Hydraulic Single Phase – 100V, 120V, 220V	Electric/Hydraulic Single Phase – 100V, 120V, 220V
Voltage	3 Ph – 380V, 480V, 600V	3 Ph – 380V, 480V, 600V
Input Power 480V	370 watts	550 watts
Thermal Protection	Thermal Circuit	Thermal Circuit
Compliance	CE Standards & UL	CE Standards & UL XP DIV I+II
Motor Protection	XP DIV II+I	
CONTROL		
480V Units/Control Box	10 units/motors	10 units/motors
CONTROL SYSTEM		
Safety System	Monitored Loop	Monitored Loop
Control Voltage	24 volt AC	24 volt AC