

Portable

Manufactured in 10 ft. lengths* and weighing only 170 lbs, they can be carried into position and set up in minutes. A foam filled core sandwiched between stainless steel plates means they are structurally strong, while remaining light and durable. The units stack and lock for easy transport. All accessories, hoppers and side extensions are also constructed from weight saving material.

*Available lengths: 5' (1.5m), 10' (3m), 15' (4.5m), 20' (6m)
Available widths: 15" (40cm), 20" (52cm)

Powerful

Miniconveyor uses powerful 370 and 550 watt motors, mounted inside the end rollers and specifically designed and manufactured in the USA for the application. Turning the belts at 80 and 120 ft/min, Miniconveyor is the fastest conveyor system in its class.

Versatile

Miniconveyor can go up a flight of stairs, make 90° turns, run on a 40° slope, across a rooftop, over rubble and more without a problem. Miniconveyor can be quickly deployed into place on site. Miniconveyors have been tested from the subways of New York to the rough terrain in Japan. The belts are reversible.

Rugged

Built for tough and demanding environments. The belts are made of high frequency PVC. Miniconveyor Systems are corrosion free, all aluminum and stainless steel construction. Drive motors are sealed to IP65 standards and protected by a thermal overload circuit to guard against damage. The impact resistant control box is waterproof and built to last. They cannot be built any tougher.

Manufactured by:



1980 Parker Court
Stone Mountain GA 30087
sales@miniveyorusa.com

1-866-736-8921
T. 678-344-1165
F. 678-387-6964

The Portable, Powerful Fire & Emergency Conveyor



Modular

Modular construction lends itself to rescue efforts. Units can be locked together using a clamp kit and 4 modules can provide a 40ft (12m) unsupported span. Miniconveyor systems can be configured to adapt to changing needs. The size and weight allow Miniconveyor to reach difficult places and traverse all kinds of rough terrain.

Safe

Every part of the system has been designed with safety in mind. The control box circuit is 24 AC and it is GFI-rated to ensure the safety of all individuals. The drive mechanism is contained within the frame offering no pinch points and the belt edges are protected under guard. Side extensions and hoppers are all easily installed using bolts to ensure a secure assembly.



A **cantilever** placed on a **set of legs** enables the discharge conveyor to overhang.

Side extensions allow for moving loose materials to eliminate any spillage.

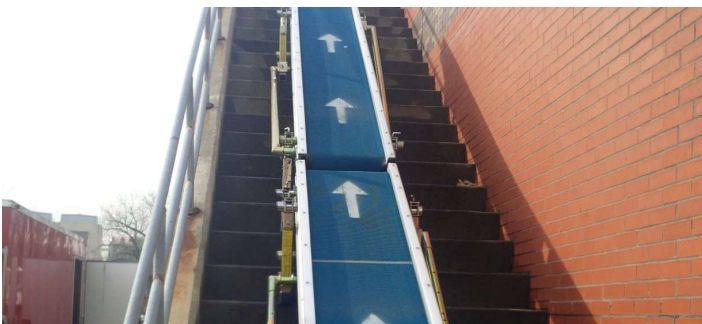
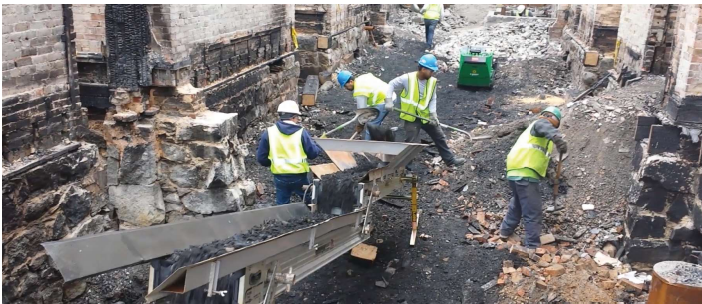
Hand loading, Minidigger and Skidsteer **hoppers** are available.

Clamp Kits lock units together to span up to 40' with no center support.
(Transition Clamp Kit pictured)

Adjustable **leg kits** set up and adjust quickly without tools. Turn corners and convey material at angles up to 40°



Add a **wheel kit** and move units effortlessly



Miniconveyor is available in 5ft, 10ft, 15ft or 20ft lengths in either 15in. or 20in. width. Multiple voltages and belt types are available.

CONVEYOR	15" (40cm) wide	20" (52cm) wide
Length (other lengths also available)	10ft (3m)	10ft (3m)
Width	15.5in (40cm)	20.5in (52cm)
Depth	7.75in (19cm)	7.75in (19cm)
Weight - approx.	150 lbs (68kg)	180 lbs (90kg)
Construction (Bed/Sides)	Stainless/Aluminum	Stainless/Aluminum
480V 3PH Speed (60Hz)	80ft/min (24m)	120ft/min (37m)
Nominal Load (3PH)	600lbs (272kg)	600lbs (272kg)
Maximum Angle*	40°	40°
<small>*Load and condition dependent</small>		
BELT	15" (40cm) wide	20" (52cm) wide
Belt Material	Reinforced PVC	Reinforced PVC
Belt Width	11.75in (29.85cm)	16.75in (42.55cm)
Belt Thickness	0.125in (0.318cm)	0.125in (0.318cm)
Belt Fastener	Stainless Wire Hook	Stainless Wire Hook
Standard Cleats* <small>*Other belt types available including MSHA, food grade, smooth, all grip, crescent & cleats up to 3" (7.6cm)</small>	1in on 12in center (2.54cm on 30.48cm center)	1in on 12in center (2.54cm on 30.48cm center)
Electrical	15" (40cm) wide	20" (52cm) wide
Motor Type	Electric or Hydraulic	Electric or Hydraulic
Voltage	480V 3PH	480V 3PH
Thermal Protection	Thermal Circuit	Thermal Circuit
Compliance	CE Standards & UL	CE Standards & UL
Motor Protection	Enclosed IP65	Enclosed IP65
CONTROL BOX/ SLAVE BOX	15" (40cm) wide	20" (52cm) wide
Units per Control Box 480V 3PH	10 Conveyors	10 Conveyors
Units per Slave Box 480V 3PH	10 Conveyors	10 Conveyors
CONTROL SYSTEM	15" (40cm) wide	20" (52cm) wide
Safety System	Monitored Loop	Monitored Loop
Control Voltage	24 Volt AC	24 Volt AC

Manufactured by:

Access Construction Equipment



1980 Parker Court, Suite D
Stone Mountain, GA 30087
Sales@miniconveyorusa.com
www.accessconstructionequipment.com

1-866-736-8921
T. 678-344-1165
F. 678-387-6964

